

CLIMATE

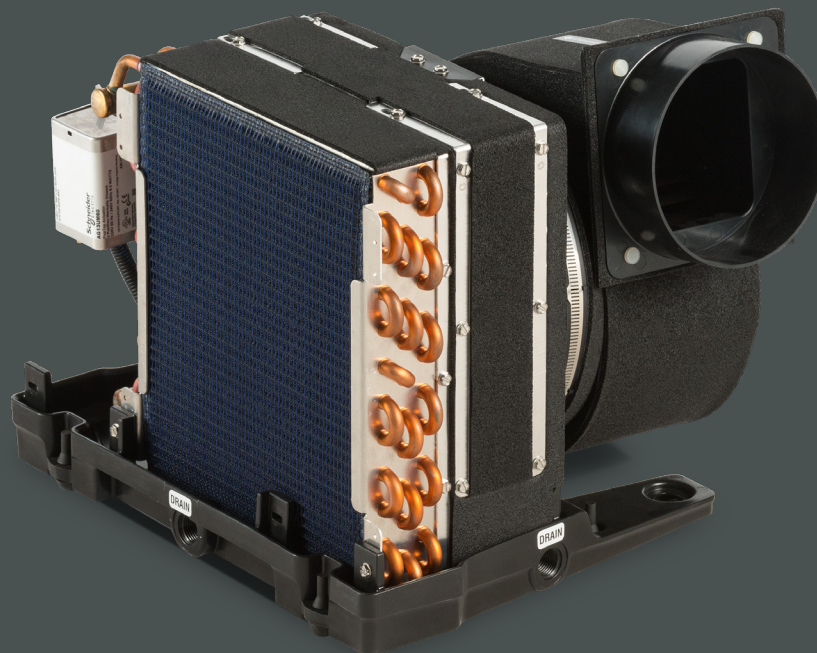
# AU-HV/DC AIR HANDLER

Redesigned for easier installation and improved performance. Featuring a rust-free composite drain pan, high-velocity blowers and flexible mounting options, this air handler incorporates innovative features for quiet, powerful performance.

**COMPLETE REDESIGN**  
IMPROVED PERFORMANCE

**EASY TO INSTALL**  
MOUNTING OPTIONS

**HIGH-VELOCITY BLOWER**  
ROTATION OPTIONS



115V/50 - 60Hz  
230V/50 - 60Hz



6,000 - 24,000  
BTU

Mobile living made easy.

 **DOMETIC**

Model <sup>1 2</sup>	AU6HV		AU9HV		AU12HV		AU18HV		AU24HV	
Nominal Capacity - Cool (BTU/h)	6000		9000		12000		18000		24000	
Voltage @ 50/60Hz 1-Ph (V)	230	115	230	115	230	115	230	115	230	115
Full Load Amps (FLA) Cool (A)	0.83	1.56	0.61	1.14	0.78	1.61	1.18	2.52	1.64	3.4
Full Load Amps (FLA) Heat (A)	5.18	10.26	4.96	9.84	7.3	14.65	14.22	28.61	14.68	29.49
Optional Electric Heat (kW)	1		1.5		1.5		3		3	
Max. Circuit Breaker (A)	10	15	10	15	10	20	15	30	20	35
Min. Circuit Ampacity (A)	6	11	6	11	8	16	15	30	16	31
Water Flow (gpm/lpm)	1.5/5.7		2.3/8.8		3/11.4		4.5/17.1		6/22.8	
Air Flow (cfm/m3h)	229/390		278/473		338/575		465/791		506/860	
External Static Pressure (in H2O/Pa)	0.3/74.7		0.3/74.7		0.3/74.7		0.3/74.7		0.3/74.7	
Chilled Water Pressure Drop (PSI)	1.1		4.4		8		4.6		11	
Max. Height (in/mm) <sup>3</sup>	12.13/309		13.31/339		13.38/340		15.38/391		16.75/426	
Max. Width (in/mm) <sup>3</sup>	14.5/369		16.5/420		16.5/420		20.13/512		22.63/575	
Max. Depth (in/mm) <sup>3</sup>	12.56/320		13.25/337		14.25/362		15/381		15.38/391	
Drain Connection Size (in/mm)	0.5/13		0.5/13		0.5/13		0.5/13		0.5/13	
Drain Connection Type	FPT		FPT		FPT		FPT		FPT	
Chilled Water Connection Size (in/mm)	0.5/13		0.5/13		0.5/13		0.5/13		0.5/13	
Chilled Water Connection Type	FPT		FPT		FPT		FPT		FPT	
Min. Supply Duct Size (in/mm)	5/127		6/153		6/153		7/178		8/204	
Min. Supply Air Grille Size (sq in/sq cm)	35/226		49/317		70/452		100/646		140/904	
Min. Return Air Grille Size (sq in/sq cm)	70/452		98/633		130/839		200/1291		240/1549	
Net Weight (lbs/kg)	22/10		26/11.8		30/13.6		34.75/15.8		40.5/18.4	
Gross Weight (lbs/kg)	29/13.15		34/15.4		39/17.7		45/20.5		53/24.0	

<sup>1</sup> Model numbers shown are for 115V units with high-velocity (HV) blowers. Add a 'Z' for 230V units; add '-FC' for optional flow control; add '-L\_\_' or '-R\_\_' for valve position (relative to the coil) and angle of the blower; add '\_\_\_kW' for amount of optional electric heat in kilowatts (for ex. 1.5 kW). See DWG H3050002 for a visual explanation of valve orientation and blower angle.

<sup>2</sup> 'HV' indicates high-velocity blower.

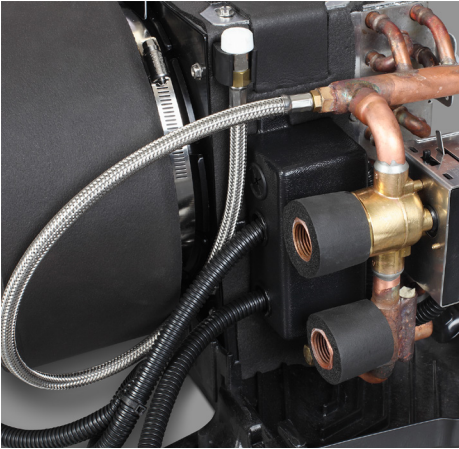
<sup>3</sup> All dimensions ± 0.30 in/8 mm.

MODEL <sup>1</sup>	AU6DC	AU9DC	AU12DC	AU18DC	AU24DC
Nominal Capacity - Cool (BTU/h)	6000	9000	12000	18000	24000
Voltage @ 50/60Hz 1-Ph (V)	230	230	230	230	230
Full Load Amps (FLA) Cool (A)	1.4	1.4	3.17	3.9	3.86
Full Load Amps (FLA) Heat (A)	5.75	7.92	9.69	17	16.9
Full Load Amps (FLA) Blower (A)	1.4	1.4	3.2	3.9	3.9
Optional Electric Heat (kW)	1	1	1.5	3	3
Max. Circuit Breaker (A)	10	10	15	20	20
Min. Circuit Ampacity (A)	7	9	11	18	18
Water Flow (gpm/lpm)	1.5/5.7	2.25/8.6	3/11.4	4.5/17.1	6/22.8
Air Flow (cfm/m <sup>3</sup> h)	200/340	300/510	400/680	600/1020	700/1190
External Static Pressure (in H <sub>2</sub> O/Pa)	2.9/722.1	2.8/697.2	2.6/647.4	2.1/522.9	1.4/348.6
Chilled Water Pressure Drop (PSI)	1.1	4.4	8	4.6	11
Max. Height (in/mm) <sup>2</sup>	11.7/298	13.4/341	13.4/341	14.4/366	15.5/394
Max. Width (in/mm) <sup>2</sup>	14.4/366	16.4/417	16.4/417	19.9/506	22.4/569
Max. Depth (in/mm) <sup>2</sup>	14/356	14/356	16.7/425	17.3/440	17.3/440
Drain Connection Size (in/mm)	0.5/13	0.5/13	0.5/13	0.5/13	0.5/13
Drain Connection Type	FPT	FPT	FPT	FPT	FPT
Chilled Water Connection Size (in/mm)	0.5/13	0.5/13	0.5/13	0.5/13	0.5/13
Chilled Water Connection Type	FPT	FPT	FPT	FPT	FPT
Min. Supply Duct Size (in/mm)	5/127	6/153	6/153	7/178	8/204
Min. Supply Air Grille Size (sq in/sq cm)	35/226	49/317	70/452	100/646	140/904
Min. Return Air Grille Size (sq in/sq cm)	70/452	98/633	130/839	200/1291	240/1549
Net Weight (lbs/kg) <sup>3</sup>	24/10.9	26.5/12.1	33.25/15.1	42/19.1	46/20.9
Gross Weight (lbs/kg)	31/14.1	35/15.9	42/19.1	54/24.5	58/26.4

<sup>1</sup> Model numbers shown are for 230V units with brushless "WhisperCool" (DC) blowers. Add a 'Z' for 230V units; add '-FC' for optional flow control; add '-L\_' or '-R\_' for valve position (relative to the coil) and angle of the blower; add '\_\_\_kW' for amount of optional electric heat in kilowatts (for ex. 1.5 kW). See DWG H3050002 for a visual explanation of valve orientation and blower angle.

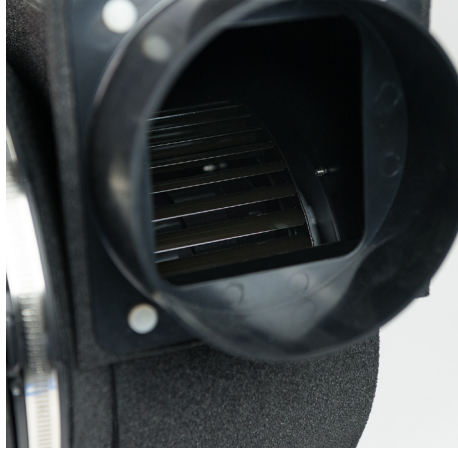
<sup>2</sup> All dimensions ± 0.30 in/8 mm.

# RUST-FREE, ANTI-SLOSH DRAIN PAN WITH QUICK AND EASY INSTALLATION



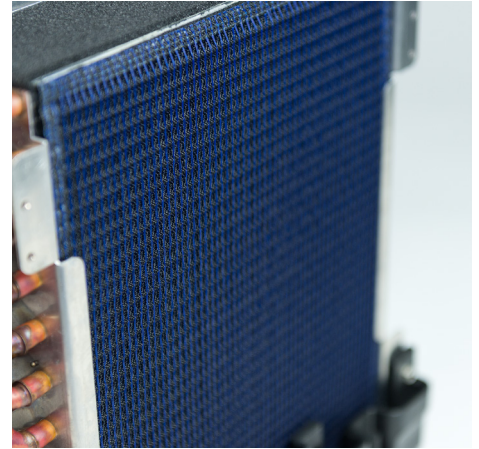
## 1. Optional EU Package

Upgrades include improved insulation and wire loom, protective cover for water-tube hairpins, and more



## 2. Optional DC "Whispercool" Blowers

Extremely quiet yet powerful



## 3. Return Air Filter

Our 1/4" filtration media features an electrostatic charge that assists in filtering dirt, dust and other pollutants from the air



## 4. 270° Blower Rotation

Single adjustment screw lets you easily and quickly set the best angle for connection to duct



## 5. Composite Drain Pan

Durable and rust free and includes vibration isolation for quiet operation