

CLIMATE

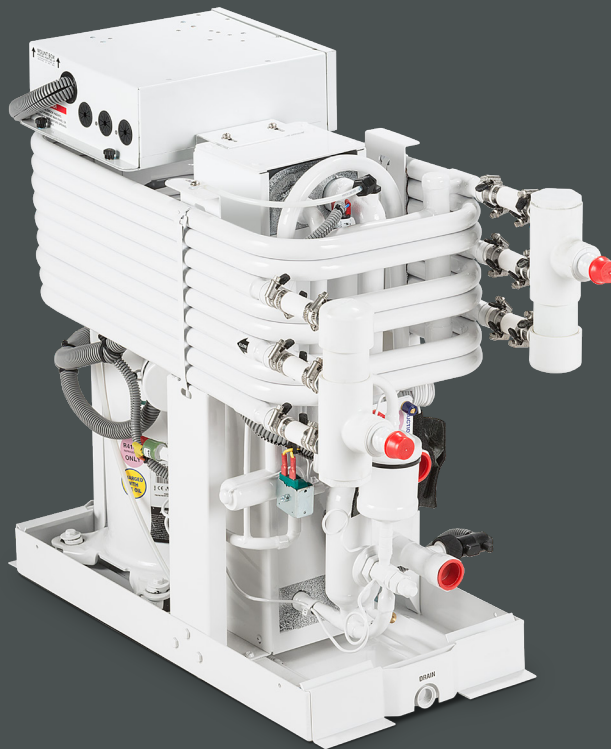
MCGX TITANIUM CHILLERS

Featuring a compact base design, these modules can be staged to provide a larger system which is easily retrofitted and staged in the field. Unaffected by vibration, moisture or ambient temperatures up to 140 ° F/60 ° C, these condensing units can be installed in any convenient location.

ULTRA DURABLE
TITANIUM CONDENSER

CREATE LARGER SYSTEM
COMBINE MULTIPLE MODULES

DIAGNOSTIC CONTROLLER
MONITOR & PROTECT



230V/60Hz/1-Ph or 3-Ph
220-240V/50Hz/1-Ph
460V/60Hz/3-Ph
380V/50Hz/3-Ph



24,000 - 180,000 BTU

Mobile living made easy.

 **DOMETIC**

COMPACT BASE & TITANIUM DURABILITY

Model ¹	MCGX24					MCGX36					MDGX48				
(BTU/h)	24000					36000					48000				
Voltage(V)	230	220	230	380	460	230	240	230	380	460	220	230	230	380	460
Cycle (Hz)/Phase (Ph)	60/1	50/1	60/3	50/3	60/3	60/1	50/1	60/3	50/3	60/3	50/1	60/1	60/3	50/3	60/3
Full Load Amps (FLA) Cool (A)	6.4	9.6	5.5	3.5	2.7	12	12.3	8.3	5.1	3.9	14.7	13.8	10.1	5.8	5.2
Full Load Amps (FLA) Heat (A)	9.5	11.9	7.3	4.6	3.6	15.7	18	10.9	6.6	5	21.4	20.2	14	7.6	6.6
Locked Rotor Amps (LRA) (A)	58.3	97	58	45	28	105	115	95	50	45	130	150	120	70	60
Max. Circuit Breaker (A)	45	45	29	20	18	70	75	50	27	23	80	80	50	33	30
Min. Circuit Ampacity (A)	25	28	17	13	10	43	41	27	15	12	50	48	33	19	17
Refrigerant Type	R410A					R410A					R410A				
Height-Without Elec. Box (in/mm)	17.22/438					23.57/599					23.68/602				
Height-With Elec. Box (in/mm)	21.74/553					23.57/599					23.68/602				
Width-Drain Pan (in/mm)	12/305					12/305					12/305				
Max. Width (in/mm)²²	12/305					12.5/318					13/331				
Depth-Drain Pan (in/mm)²²	24/610					24/610					24/610				
Max. Depth (in/mm)²	24.97/635					30.78/782					31.22/793				
Seawater Inlet Connection (in/mm)	0.625/16					1/26					1/26				
Chilled Water Connection Size (in/mm)	1/26					1/26					1/26				
Height-Electrical Box (in/mm)	11/280					11/280					11/280				
Width-Electrical Box (in/mm)	9.8/249					9.8/249					9.8/249				
Depth-Electrical Box (in/mm)	3.7/94					3.7/94					3.7/94				

MCGX60		MCGX72				MCGX90			MCGX120			MCGX150			MCGX180		
60000		72000				90000			120000			150000			180000		
0	380	230	230	380	460	230	380	460	230	380	460	230	380	460	230	380	460
1	50/3	60/1	60/3	50/3	60/3	60/3	50/3	60/3	60/3	50/3	60/3	60/3	50/3	60/3	60/3	50/3	60/3
8	8.3	20.1	14.2	10.1	7.1	22.3	14.7	9.2	25.3	15.4	12.3	30.6	19.9	15.1	38.3	24.1	20.2
3	10.8	29.3	17.9	13.3	8.9	31.5	14.9	13.4	31.3	19.2	15.7	38.9	24.5	19.3	50	29.9	25
5	87	145	160	100	87	235	110	110	267	147	142	304	197	147	351	239	197
0	40	90	80	42	42	100	56	42	103	60	50	144	86	67	168	55	86
7	24	49	45	24	24	57	32	24	58	38	32	80	49	38	94	55	49
R410A		R410A				R410A			R410A			R410A			R410A		
23.44/596		23.44/596				27.66/703			33.61/854			46.24/1175			49.5/1258		
26.08/663		26.08/663				31.07/790			37.71/958			N/A			N/A		
12/305		12/305				16/407			16/407			18.63/474			18.63/474		
13.25/337		13.25/337				17.37/442			17.4/442			19.5/496			19.5/496		
24/610		24/610				24/610			24/610			26.75/680			26.75/680		
780	30.07/764	30.04/764				30.84/784			30.84/784			31.88/810			31.88/810		
1/26		1/26				1.5/38			1.5/38			2/51			2/51		
1/26		1/26				1.5/38			1.5/38			2/51			2/51		
11/280		11/230				13.3/338			13.3/338			N/A			N/A	N/A	13.3/338
9.8/249		9.8/249				12/305			12/305			N/A			N/A	N/A	12/305
3.7/94		3.7/94				4.3/110			4.3/110			N/A			N/A	N/A	4.3/110

COMPACT BASE AND TITANIUM DURABILITY



1. TITANIUM TOUGH

Titanium condenser dramatically increases product lifespan



2. EXPANDABLE

Up to six modules can be staged



3. ECO-FRIENDLY

Hermetically sealed and pre-charged with environmentally friendly R410A refrigerant



4. SAFETY FEATURES

Chilled Water Flow switch, high- and low-pressure switches, high- and low-aquastat sensors are provided with the standard controls



5. EASY TO INSTALL

Can be installed in any convenient location



6. WEATHER RESISTANT

Unaffected by vibration, moisture or ambient temperatures up to 140° F/60°C