

POWER & CONTROL

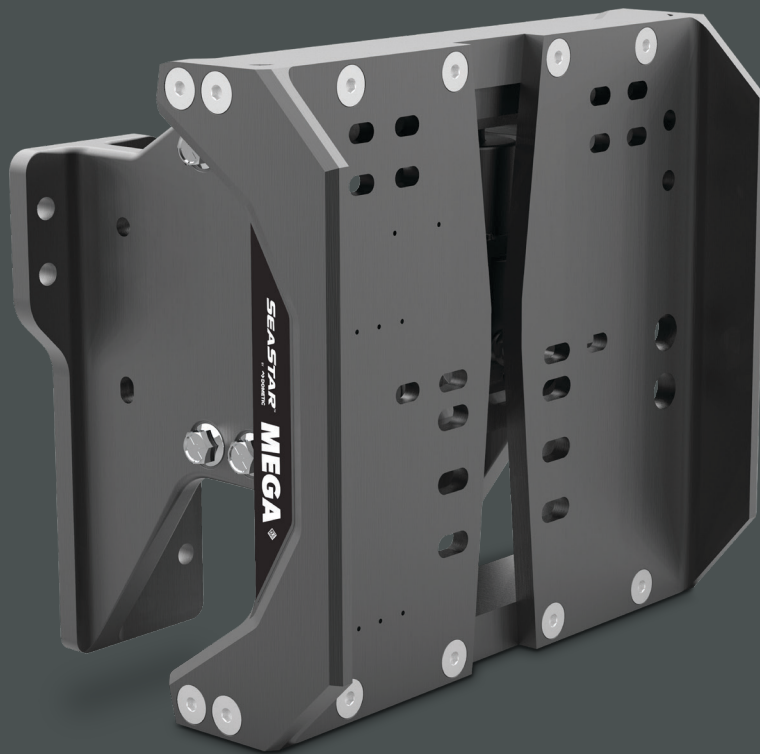
SEASTAR MEGA JACKPLATE

Dometic's Mega Jackplate has been developed to withstand the power of high performance engines and provide boaters with the ability to maximize the output of their engines while offering more flexibility in shallow water. The Mega Jackplate is rated to 600 HP and is an extension of existing product line.

SETBACKS OFFERED
6", 8" & 10" IN BOTH VERSIONS

HIGHER ENGINE RATING
UP TO 600 HP

TWO VERSIONS
STANDARD & WIDE BOLT PATTERN



Mobile living made easy.

 **DOMETIC**

ENGINEERED TO HANDLE THE STRONGEST OUTBOARD ENGINES ON THE MARKET



Mega Plate — a meticulously engineered and robustly built electric jackplate system designed for today’s large, heavy and powerful outboard motors. It is offered in 6”, 8” and 10” setbacks. There will be 2 versions available, a standard bolt pattern designed to fit engines like Yamaha XTO and a wide bolt pattern designed to fit Merc 500/600.

Benefits of MEGA Jackplate

- Rated up to 600HP
- Can fit all outboard engines on the market
- Rigorously designed and tested for high impact and cyclic loads
- Comes with corrosion protection anodes
- Built in linear position sensor easily integrates with Dometic Digital Switching

ORDERING INFORMATION

MODEL	JP6060	JP7060	JP6080	JP7080	JP6100	JP7100
SKU	9600050077	9600050836	9600050834	9600050837	9600050835	9600050838
BOLT PATTERN	Standard	Wide	Standard	Wide	Standard	Wide
SETBACK (in)	6	6	8	8	10	10
WEIGHT (lbs)	117	121	122	126	127	131

Differences Between Standard and Wide Versions

