

POWER & CONTROL

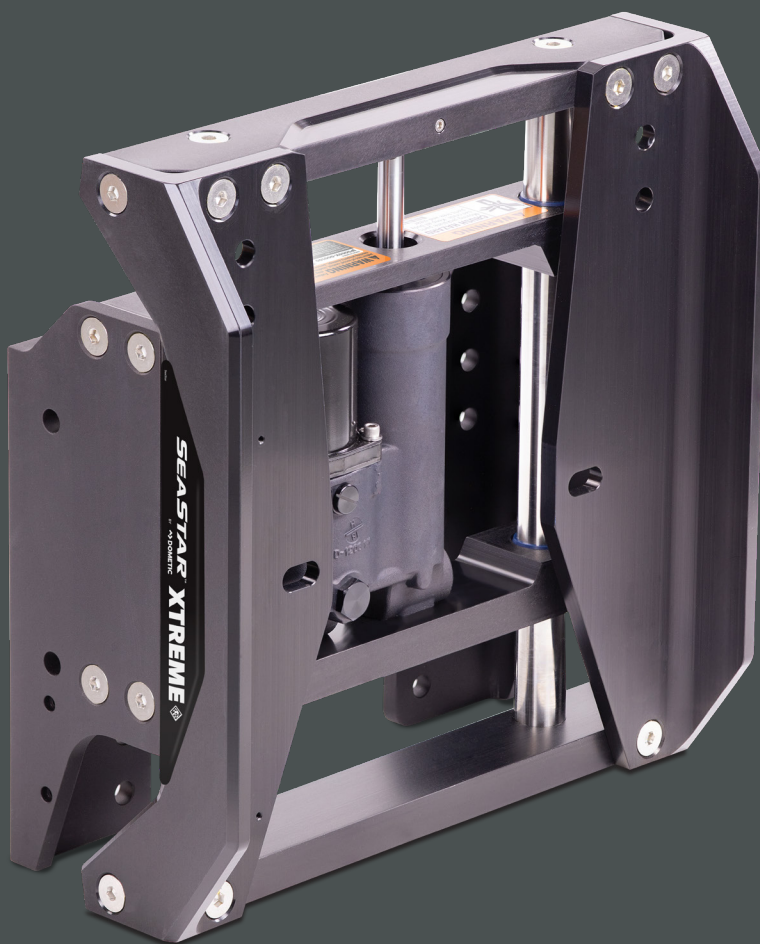
SEASTAR XTREME JACKPLATES

The Dometic SeaStar Xtreme Jackplate is rated for 400 horsepower gasoline engines and is designed to maximize engine tilt when used with Dometic SeaStar steering cylinders.

RIGID
ENGINE SUPPORT

RAPID RESPONSE
8.5 SECONDS

SLEEK, BOLD
STYLING



Mobile living made easy.

 **DOMETIC**

ONE OF THE MOST DURABLE ENGINE JACKPLATES AVAILABLE.



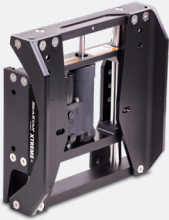
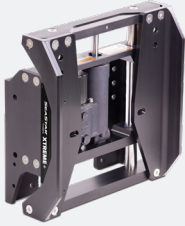
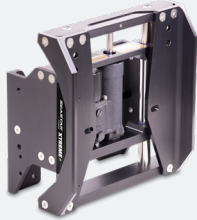
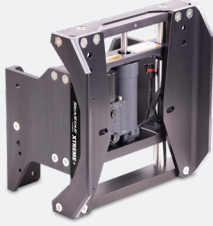
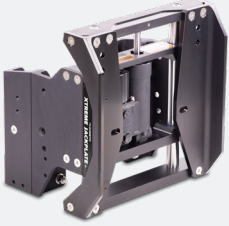
The Dometic SeaStar Xtreme Jackplate is one of the sleekest and most durable engine Jackplates available. This essential performance accessory allows for higher speed, gains in fuel economy and the ability to run in shallow water.

Available in 4, 6, 8, 10 and 12 inch setbacks. Jackplates are equipped with an integrated hydraulic actuator that lifts engines 5.6" in 8.5s. The Dometic SeaStar Xtreme Jackplate is designed to maximize engine tilt when used with Dometic SeaStar steering cylinders.

Features

- Xtreme jackplate is using high strength materials and is easily capable of handling up 400 horsepower engines
- Rapid hydraulic response in 8.5 seconds
- Complete rigid engine support at full thrust
- Easily moves engine up or down at full thrust
- Smooth operation with composite bushings
- Easy wrench access to engine bolts from the side
- Compatible with all shallow water anchors
- High output integrated actuator to lift and lower engines in all conditions
- Environmentally sealed non-contact SmartStick position sensor kit available for precise height information
- Designed to maximize engine tilt with Dometic SeaStar steering cylinders
- High visibility lift scale for quick glance operation
- Integrated circuit breaker gives electrical protection right at the battery post
- All hydraulic Jackplates come with basic rocker switch DK4020

XTREME JACKPLATE OPTIONS

4" Setback	6" Setback	8" Setback	10" Setback	12" Setback
				
JP5040X*	JP5060X	JP5080X	JP5100X	JP5120X

Note: * Accessory adapter DK4600 is required for installation of anchoring systems on JP5040X.

SLEEK, BOLD STYLING THAT REDEFINES THE LOOK FOR JACKPLATES.

ORDER INFORMATION	
ACCESSORIES	PART NO.
ProTrim Switch Single Function	PT1000-2P
ProTrim Switch Dual Function	PT2000-2P
SmartStick and Gauge Kit	DK4220
Gauge and Harness Kit	DK4320
Accessory Adapter*	DK4600
Kit, Anode	DK4850
Hole Shot Plate Kit, 6"	HSP5060
Hole Shot Plate Kit, 8"	HSP5080
Hole Shot Plate Kit, 10"	HSP5100
Hole Shot Plate Kit, 12"	HSP5120
4x SS bolts, brass nylock nuts and SS washers. 1/2"-13 UNC X 2-1/2" L	DK6125
4x SS bolts, brass nylock nuts and SS washers. 1/2"-13 UNC X 3-1/2" L	DK6135
4x SS bolts, brass nylock nuts and SS washers. 1/2"-13 UNC X 4-1/2" L	DK6145
4x SS bolts, brass nylock nuts and SS washers. 1/2"-13 UNC X 6-1/2" L	DK6165
Dometic SeaStar Stabilizer Clips, (pack of 2)	HYCL-001
SPARE PARTS	PART NO.
Smartstick Replacement Kit	DK4250
Jackplate Wire Harness	DK4420
Actuator Kit, 3/8" Mount Bolt, 5/16" socket	DK4710
Actuator Kit, 7/16" Mount Bolt, 3/8" socket	DK4720
Basic Rocker Switch*	DK4020

Notes: * Accessory adapter DK4600 is required for installation of anchoring systems on JP5040X.

** Included with Jackplate harness.

AVAILABLE IN 4, 6, 8, 10 AND 12 INCH SETBACKS.

Technical Information

